



Hitachi Feature Tool Usage Instructions

To support World Wide Web release
of Hitachi Feature Tool v1.92

26 January, 2004

Table of Contents

WHAT IS THE HITACHI FEATURE TOOL?	3
CREATING A FEATURE TOOL DISKETTE	4
WINDOWS 9X, ME, NT, 2000 & XP	4
LINUX.....	5
RUNNING THE HITACHI FEATURE TOOL	6
NAVIGATION SHORTCUT'S,.....	7
AUTOMATIC ACOUSTIC MANAGEMENT	8
CACHE MANAGEMENT	10
DEVICE CAPACITY	12
Pre-defined capacities	13
ULTRA DMA MODE	14
ADVANCED POWER MANAGEMENT	16
DRIVE TEMPERATURE MONITORING	18
S.M.A.R.T.	19
FEATURE MATRIX	20
DESKSTAR HARD DISK DRIVES	20
TRAVELSTAR HARD DISK DRIVES.....	20
HARDWARE SUPPORT AND RESTRICTIONS	21
USE WITH NON-HITACHI /IBM PRODUCTS	21
SERIAL ATA SUPPORT	21

What is the Hitachi Feature Tool?

The Hitachi Feature Tool is a utility, which allows the user control over some of the parameters of today's high performance ATA hard disk drives.

The features, which this release of the Feature Tool supports, are,

1. **Change the Acoustic Level** of the hard drive. This function is generally referred to as Automatic Acoustic Management (AAM) and is available on the newer Hitachi Global Storage Technologies ATA drives and Legacy IBM ATA Hard disk drives.

The acoustic level of the drive can be modified to better suite the environment in which it is functioning. The drive performance may vary as the acoustic level changes with increased acoustic management.

2. **Changing the Capacity** of the disk drive.
Change the predefined capacity of the drive. This option can be used in situations where there is a BIOS limitation and the drive is not recognised.

3. **Change the Ultra DMA Mode** that the drive is set to function at or to disable UDMA altogether.

Modern ATA drives are currently designed to function at bus speed up to 100 MB/sec. The bus speed associated with each Ultra DMA Mode is as follows.

UDMA Mode 0	-	ATA 16 (16.7 MB/sec)
UDMA Mode 1	-	ATA 25 (25 MB/sec)
UDMA Mode 2	-	ATA 33 (33 MB/sec)
UDMA Mode 3	-	ATA 48 (48 MB/sec)
UDMA Mode 4	-	ATA 66 (66 MB/sec)
UDMA Mode 5	-	ATA 100 (100 MB/sec)

Some older (Legacy) motherboard and Plug-in ATA adapters may not support the higher bus speeds and installing one of these newer ATA hard disk drives could cause a malfunction of your system. To resolve this incompatibility it may be required to reduce the bus speed that the drive is operating at to one which is more compatible with the Motherboard/Plug-in adapter.

- 4 **Changing the Cache Settings.** Read and write caching are performance enhancement features of hard disk drives. Write cache allows the drive to write data out to the disk media some time after reporting to the system that the write operation had been completed. This data is protected provided power isn't removed from the drive. Read caching is where data is read form the disk media and kept in its buffer in anticipation that the data that the system next requires is already in the buffer.
- 5 **Advanced Power Mode.** This feature allows you to change the default power saving mode of the drive. The device preserves the selected power mode across all forms of reset, that is Power on, Hardware and Software resets.
- 6 **Drive Temperature Monitoring.** This feature displays the current temperature inside the disk drive. The temperature around the disk drive is normally about 5 °C lower.
- 7 **S.M.A.R.T. – Self-Monitoring, Analysis and Reporting Technology** is intended to protect user data by monitoring and storing critical performance and calibration parameters. SMART devices uses sophisticated analysis algorithms to predict the likelihood of near-tern degradation or fault conditions.

Creating a Feature Tool Diskette

Windows 9x, Me, NT, 2000 & XP

The Hitachi Feature Tool set-up program (**FeatureTool-install.exe**) includes IBM DOS2000 and the Hitachi Feature Tool programs. Running the set-up program creates an IBM DOS2000 bootable diskette that contains the Hitachi Feature Tool. In order to run the set-up program you will need to have access to a system that is running any of the following operating systems, Windows'95, Windows'98, Windows Millennium, Windows NT, Windows 2000 or Windows XP and a formatted 1.44-MB diskette.

It is recommended that before starting the set-up program, all open Windows applications should be closed.

The following represents two examples of how the Hitachi Feature Tool diskette can be created.

Method A.

1. Insert a formatted diskette into the Floppy drive, (**A:** or **B:**).
2. Using Windows Explorer, locate the program **FeatureTool-install.exe** downloaded from the Internet.
3. To start diskette creation: double-click on the program icon and follow the on screen instructions. **Note:** you have the option to select your country location and keyboard layout, the default for these options is United States.

Method B.

1. Click Start, and then select Run.
2. Click the Browse button to locate the **FeatureTool-install.exe** set-up program.
3. Click on the filename, and then click Open.
4. Click OK to run the **FeatureTool-install.exe** set-up program.
5. Insert a formatted 1.44-MB diskette into the required floppy drive (A or B if your system has 2 floppy drives), select the target floppy on the set-up screen then click next to continue.
6. Follow the on-screen instructions.

Linux

The Hitachi Feature Tool image file (e.g. **FeatureTool-install-img.bin**) includes IBM PC DOS2000 and the FTOOL.EXE Utility

Running the Linux Disk Dump (DD) utility creates an IBM PC DOS 2000 bootable diskette that contains the Hitachi FTOOL Utility.

A formatted 1.44-MB diskette is required to create the Hitachi Feature Tool diskette.

To create the bootable Feature Tool diskette under Linux:

1. Download the Feature Tool image file (**FeatureTool-install-img.bin**) into a known directory on your PC.
2. Insert a formatted 1.44-MB diskette into your floppy disk drive.
3. Make sure that the floppy disk is un-mounted.
4. Change directory to where you saved the image file.
5. Run the Disk Dump (DD) utility with the following parameters:
DD if=FeatureTool-install-img.bin of=/dev/fd0 bs=8k
6. The bootable Feature Tool diskette will now be created, Note this could take a couple of minutes.
7. Once the creation of the bootable diskette is complete you may need to edit the Autoexec.bat file to map the keyboard for your country.

e.g. Change UK to US in the following line to go from a UK (United Kingdom) keyboard layout to a US (United States) layout.

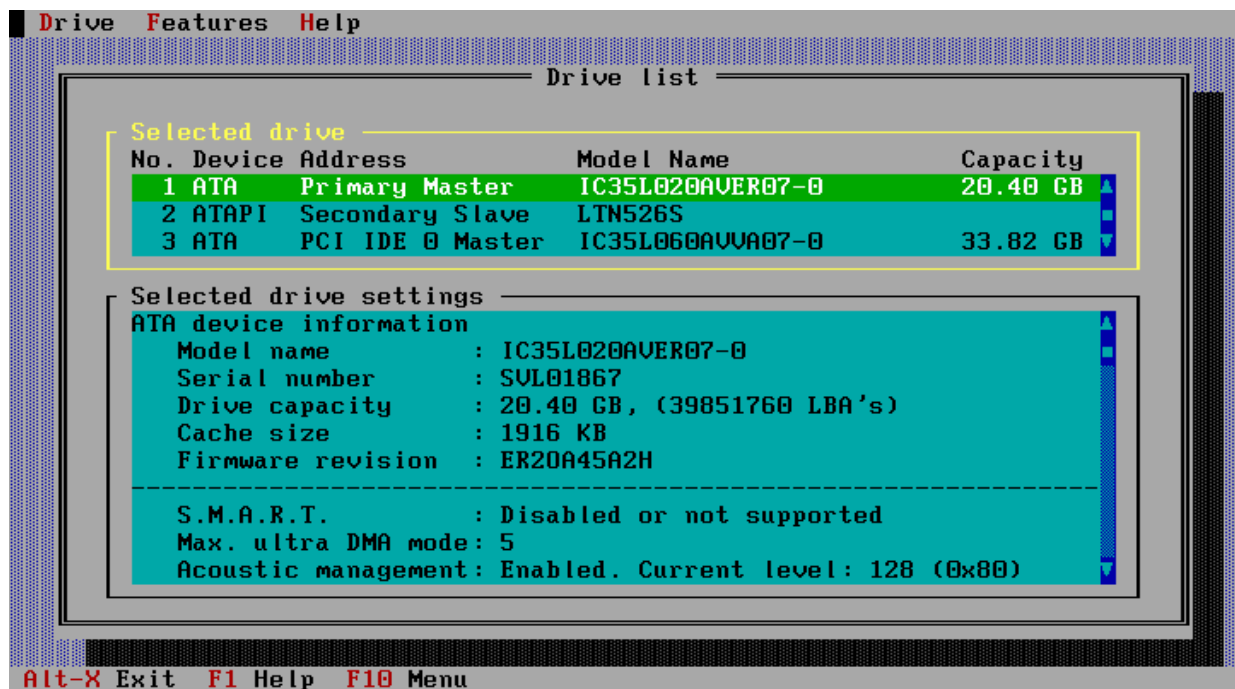
```
KEYB UK,A:\DOS\KEYBOARD.SYS
```

Running the Hitachi Feature Tool

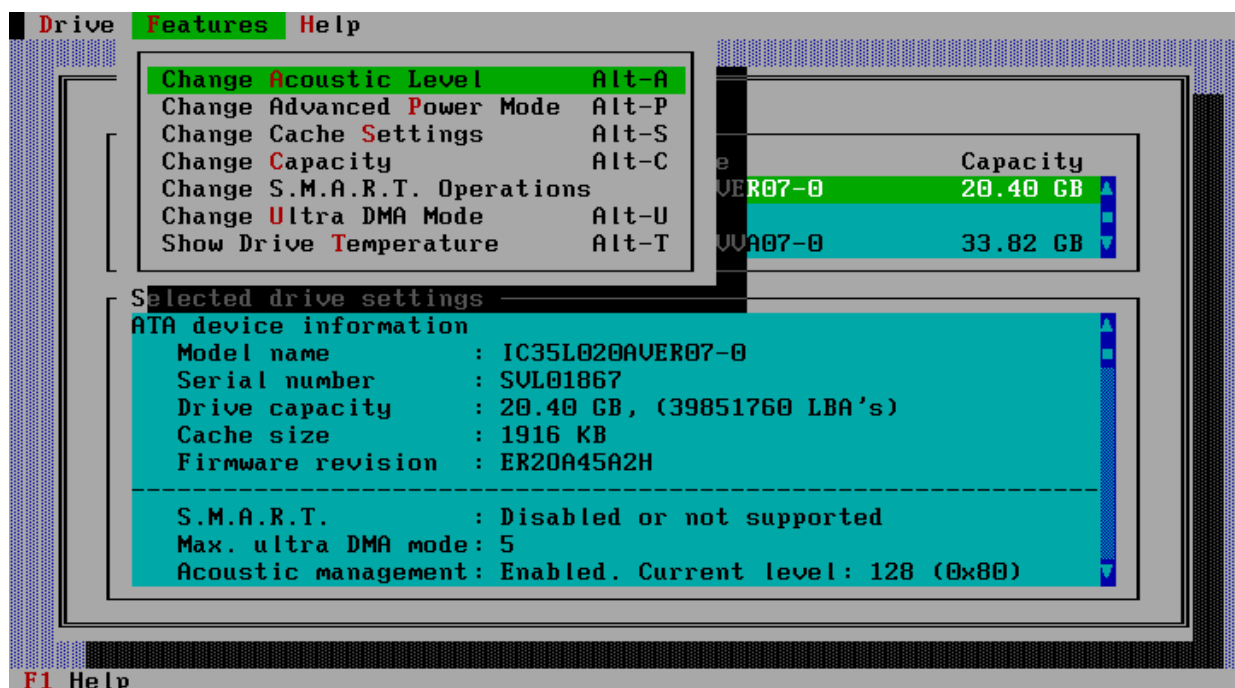
Place the prepared floppy disk in the system containing the drive to be modified and boot the system either by a) power cycling, b) pressing the reset button or c) pressing the <Ctrl><Alt> keys.

When the system boots the Hitachi Feature Tool program will load automatically and present you with a License Agreement, which you must accept to proceed.

You will then be presented with the drive list screen as shown below. This screen list all the ATA devices installed in the system and provide additional details for each such as serial number, firmware level, capacity, current acoustic mode level and the Ultra DMA mode to which the drive is currently set.



To navigate this screen the mouse can be used or alternatively use the cursor keys and the tab key. To modify a drive feature first select the drive using the mouse or cursor keys then select the pull down "Features" menu. This can be achieved with the mouse or <Alt-F> key combination. You will see a screen as shown below with the following options,



From the pull-down menu select the drive feature to be modified, for more detail on how to change each feature select from the links below.

[Acoustic Level](#), [Drive capacity](#), [Ultra DMA mode](#), [Drive Caching](#) [Advanced Power Mode](#) [S.M.A.R.T.](#) or [Temp. Monitoring](#).

NOTE: The Hitachi Feature Tool is designed for use with Hitachi Global Storage Technologies and Legacy IBM ATA Hard Disk Drives only.

Navigation shortcut's,

Several options for navigating through this utility, the easiest being the use of a mouse. For each selectable option in the different menus a highlighted character is provided which when used with the Alt key gives a quick selection option. The list below represents some of the Alt + (Highlighted key) combinations available in the program.

Esc. Return to previous menu from any sub-menu

F1 or Alt+H - Help

F10 - Menu options

Alt+A - Change drive Acoustic level

Alt+O - OK / Enter

Alt+C - Cancel

Alt+T - Select Test option

D - Disable acoustic management

E - Enable acoustic management

n - Enable acoustic management - user defined level

Alt+S - Change cache settings

W - Select/Deselect write cache

R - Select/Deselect read cache

Alt+ O - OK/enter

Alt+ C - Cancel

Alt+ D - Reset to default values

Alt+C - Change drive Capacity options

Alt+C - Cancel

Alt+O - Capacity options

M - Select Maximum capacity

3 - Select 32GB capacity

8 - Select 8GB capacity

Alt+P - Change Advance Power Mode

Alt+C - Cancel

Alt+O - OK

Alt+T - Show Drive Temperature

Alt+T - Test mode

Alt+O - OK

Alt+D - Drive pull down menu

Alt+ F - Features pull down menu

Alt+U - Change Ultra DMA Mode

Alt+C - Cancel

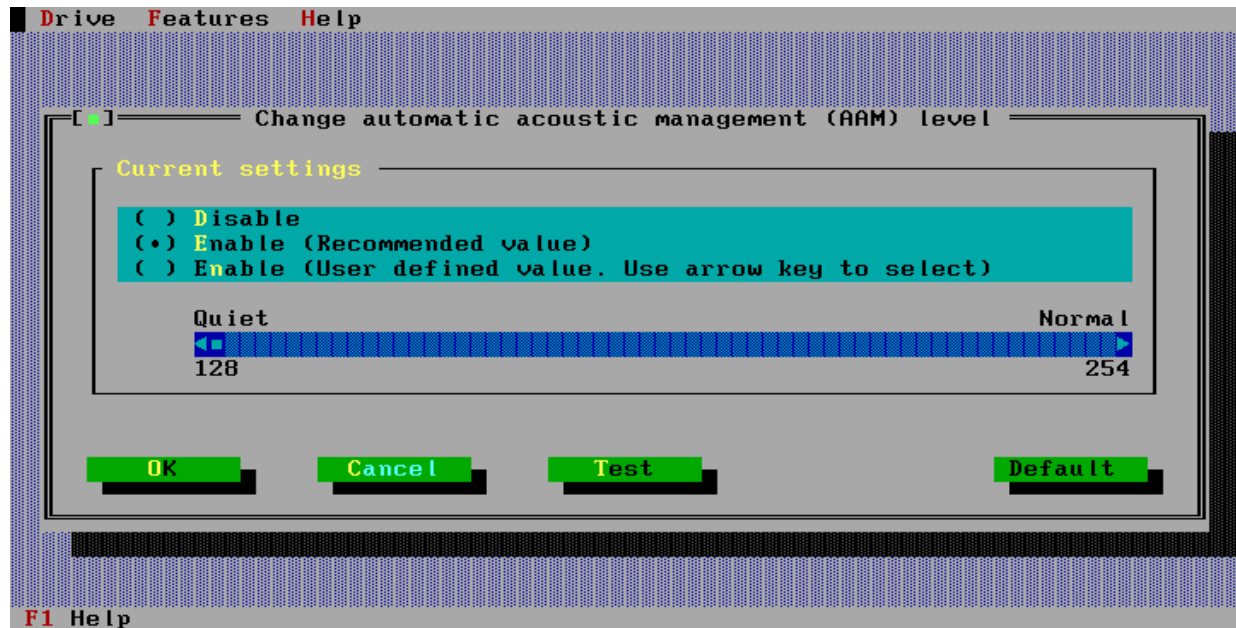
Alt+O - OK

Alt+X - Exit the Hitachi Feature Tool.

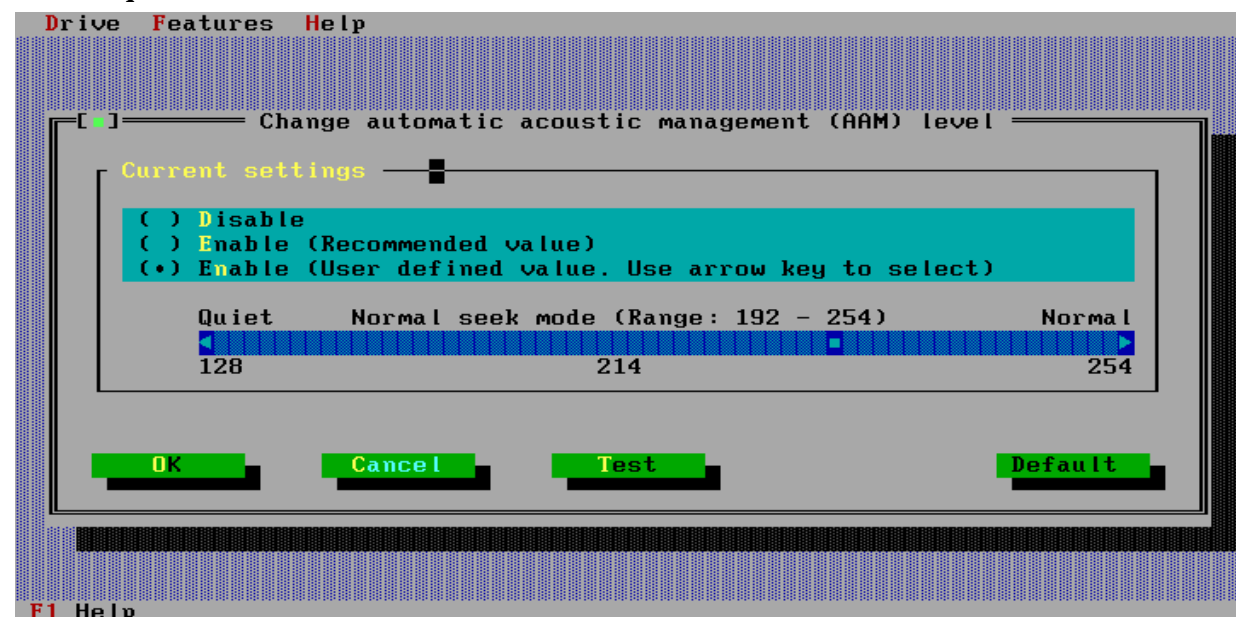
Automatic Acoustic Management

Automatic Acoustic Management (AAM) is available on all IBM Deskstar hard disk drives starting with the IBM DTLA (Deskstar 40GV and Deskstar 75GXP) and all Hitachi DeskStar/TravelStar drives. Changing the acoustic mode setting of the drive allows the user to make the acoustic level of the drive more suited for their working environment. The acoustic management level of the drive can be changed from the lowest setting (Quiet Seek Mode) to the maximum performance level (Normal Seek Mode). The drive performance and acoustic level may increase with increasing acoustic management level setting.

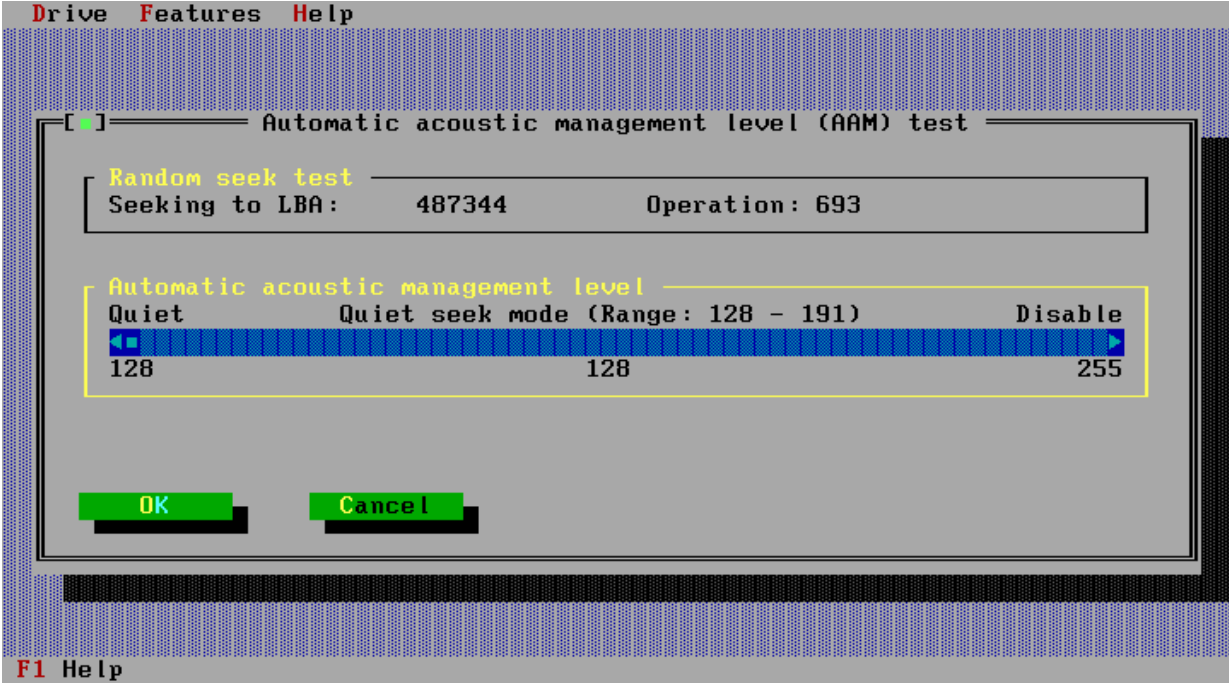
As can be seen from the screen below you have three options for automatic acoustic management, it can be **disabled**, set to the **recommended** value (normal) or **user defined**.



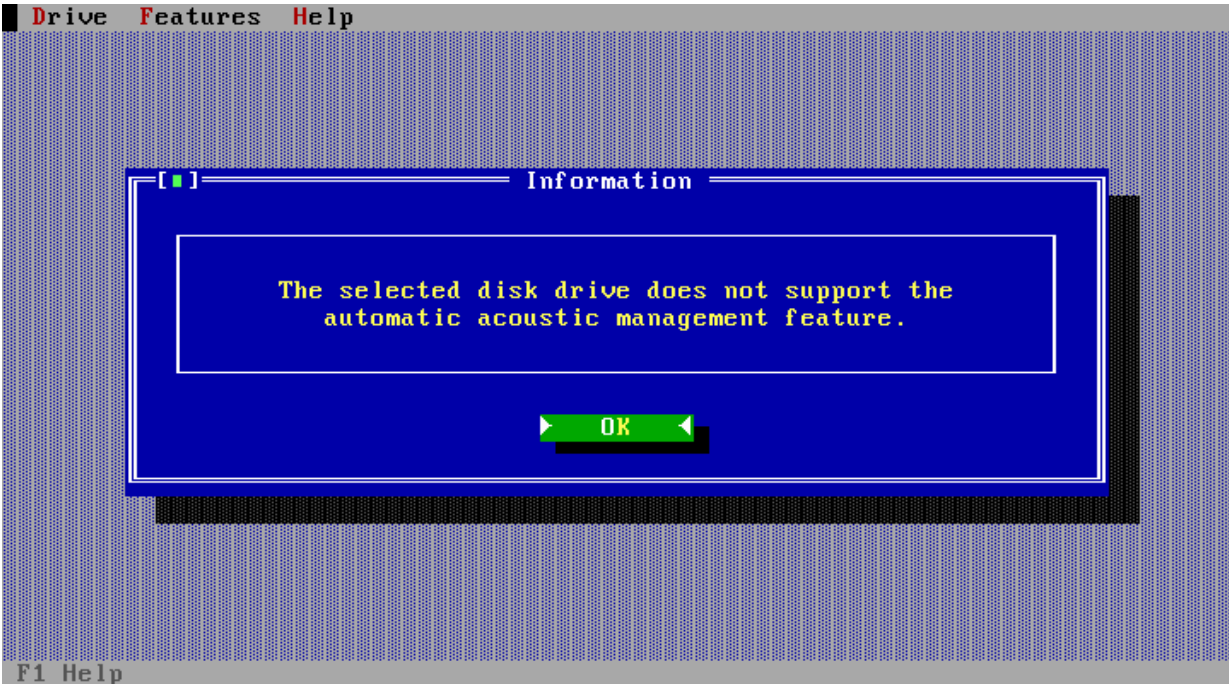
When the user-defined option is selected (see below), sliding the marker along the thermometer scale sets the acoustic value, this can be achieved by using either the mouse or the cursor keys. The text displayed above the middle of the thermometer indicates the current acoustic level setting and the range of values that comprise either the “quiet seek mode” or the “normal seek mode”. The middle value below the thermometer indicates the current set value, and will be seen to change as the slider is moved from the **quiet** end of the scale to the **normal** end.



The **Test** option allows you to assess the effect changing the automatic acoustic management level will have prior to making the change permanent. To use this option select Test (**Alt + T**) or tab to the Test button and press enter. The following screen will be displayed. Use the cursor keys to slide the marker along the thermometer scale as you do this you will see the seek rate change (i.e. the speed at which the LBA values change). When you are happy with your setting select the **OK** button to set that value and return to the change screen above. You can now select **OK** again the actually change the setting in the drive.



If the drive selected doesn't support the option you are trying to change you will see a screen that is similar to that shown below.

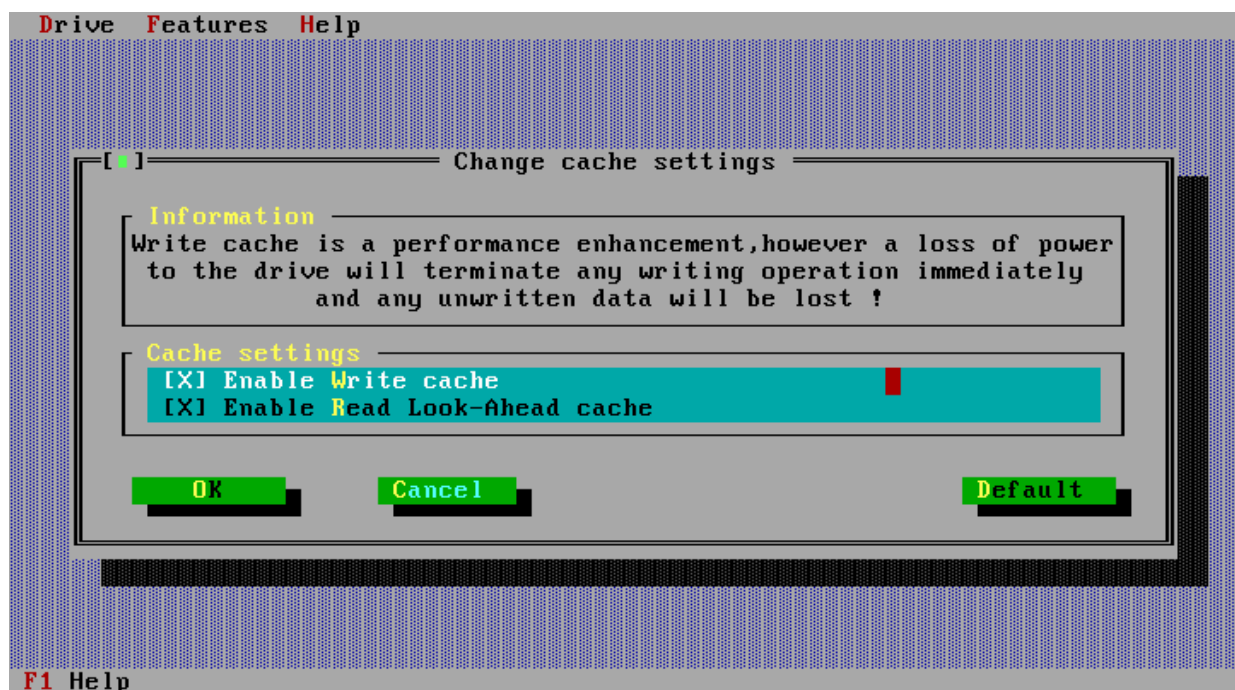


Cache Management

Write cache is a performance enhancement whereby the device reports completion of the write command (Write Sectors, Write DMA and Write Multiple) to the host as soon as the device has received all of the data into its buffer. The device assumes responsibility to write the data subsequently onto the disk. While writing data after completing the acknowledgement of a write command, neither soft nor hard resets will affect its operation. But power-off terminates the writing operation immediately and any unwritten data will be lost.

Flush cache, Soft reset, Standby, Standby Immediate and Sleep are executed after the completion of writing to disk media on enabling the write cache function. The host system can confirm the completion of a write cache operation by issuing flush cache command, Soft reset, Standby command, Standby Immediate command or Sleep command, and then, by confirming its completion.

To enable or disable a cache function select the **Features** option from the menu bar, then the **Change Cache Settings** option. You will then be presented with a screen as shown below. To change a setting simply 'Tab' or use the short cut 'Alt. + (highlighted letter)' to highlight the parameter you wish to change, use the space bar to select/deselect the item. When you have made your choice select **OK** to enable the change.



When the changes have been completed successfully you will be presented with a screen as shown below.



Note:

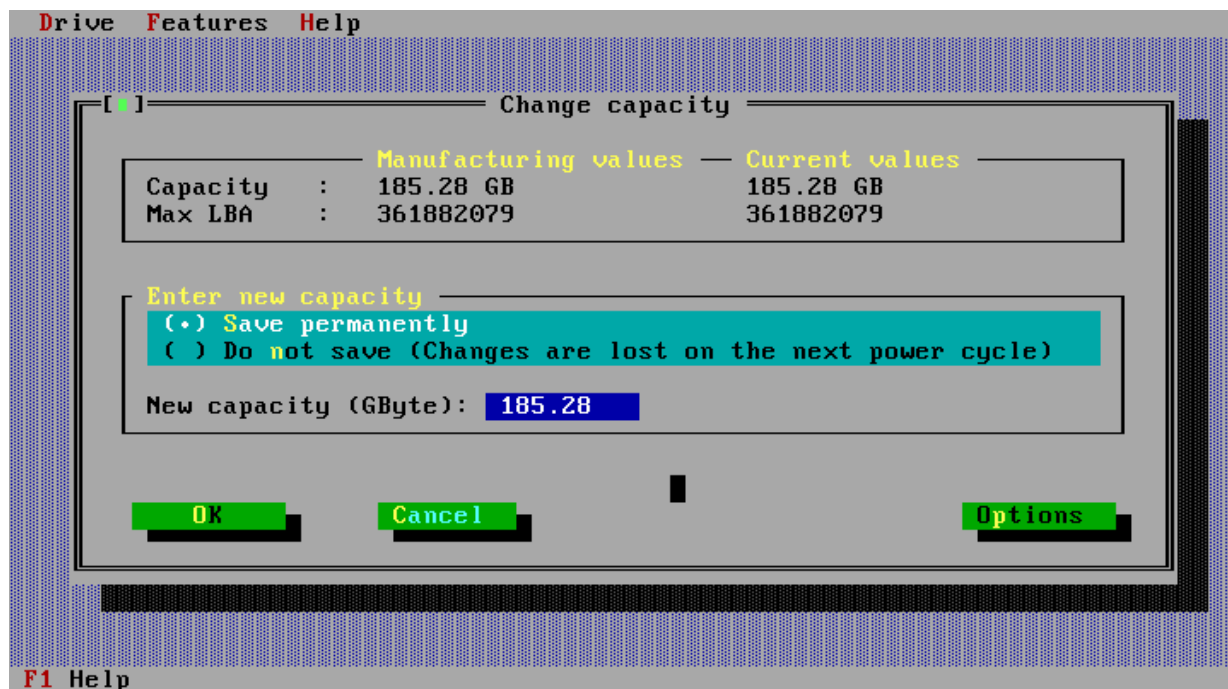
On some systems changes made to the drive cache settings are only enabled whilst there is power on the drive. Powering the system off then back on will reset the cache value to the drive defaults. This type of behaviour is mainly seen in 2.5" (mobile) hard disk drives. A simple check to find out if you system exhibits this characteristic is to power cycle the system after making your changes and re-loading the Hitachi Feature Tool utility and check if the changes previously made have been reset.

Device Capacity

This feature allows you to change the capacity of the selected drive. Two options are available

1. Change the capacity and make this change permanent
2. Make a temporary change, change will be lost when the drive (system) is power cycled.

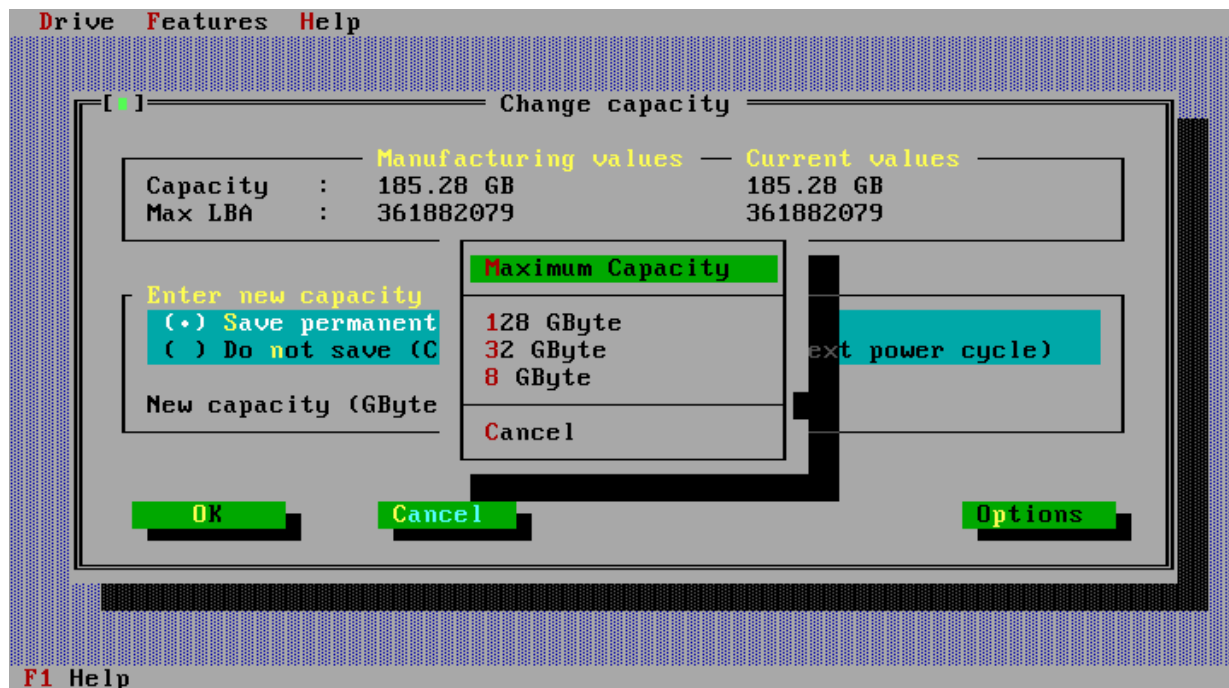
To make a change to the drive capacity you firstly need to decide if the change is to be temporary or permanent, then tab to the new capacity change box. Type in the new capacity value for the drive (to do this you need to either delete the indicated value and type in the new value **OR** press the **Insert key** and overwrite the given value). Select **OK** to confirm your change.



Some of the older Motherboards BIOS's don't support the larger capacity ATA drives, which are now available. The **Options** button provides a quick means of changing the drive capacity to just below the known boundary limits of 8GB, 32GB and 128GB, it also provides a quick means of resetting the drive to its maximum capacity.

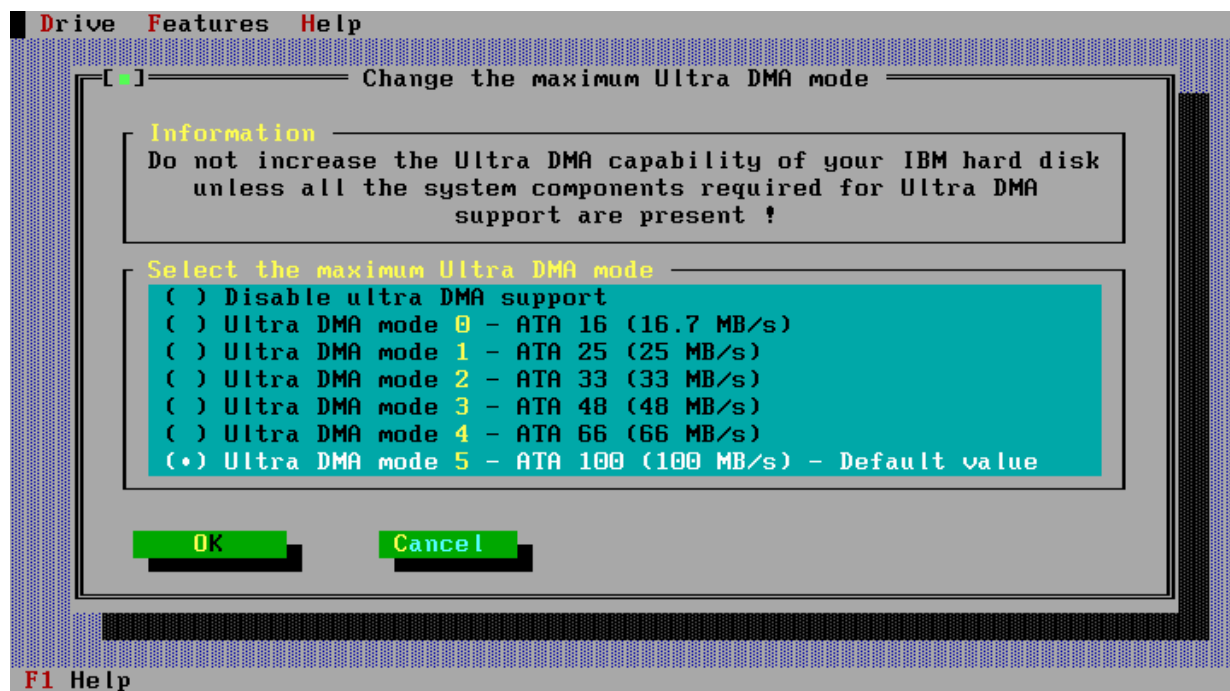
The screen shot on the next page shows the available options, as before these options can be selected by use of the cursor keys or via the hot-keys (**Alt +**).

Pre-defined capacities

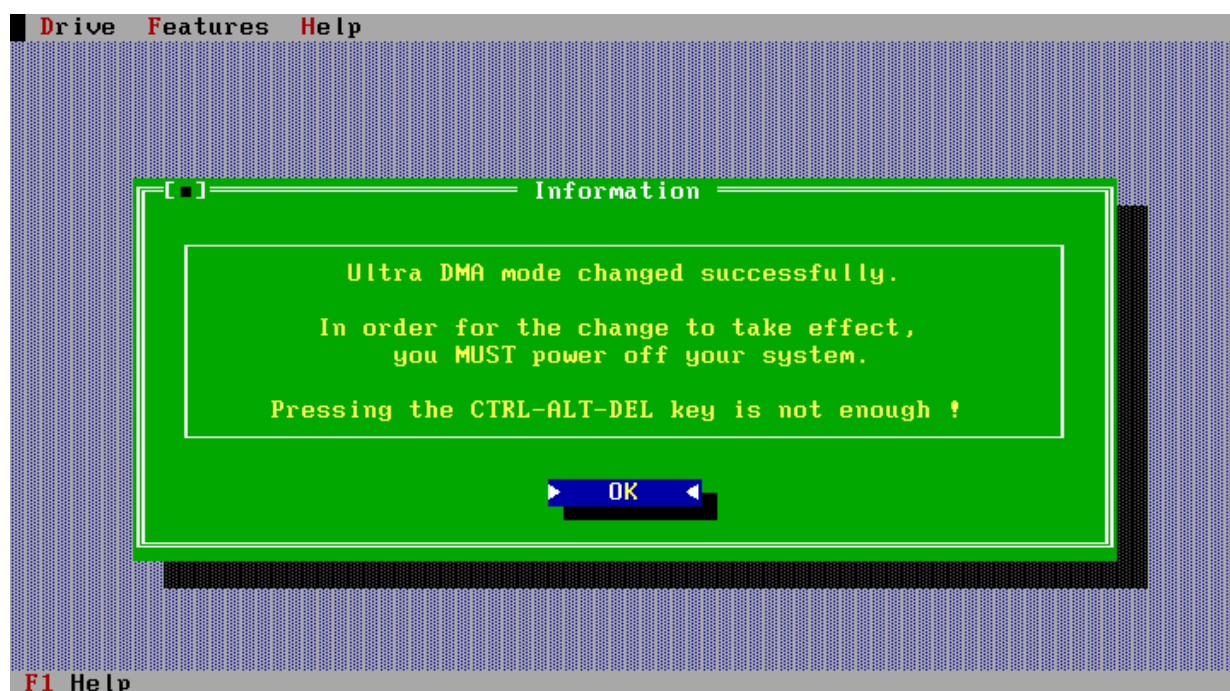


Ultra DMA Mode

When the change Ultra DMA Mode option is selected from the drop-down menu or by use of the hot-keys (**Alt + U**) you will be presented with a screen as shown below. The number of UDMA option settings which you will be presented with is determined by the maximum UDMA mode that the selected drive supports, e.g. if your drive is only capable of supporting up to Mode 4 (66 MB/sec) then you will only see UDMA modes 0 to 4 listed.



The current UDMA Mode setting of the selected drive will be highlighted, to change to a new setting use the cursor up/down keys to select the desired value, then tab to the **OK** button and press enter. When the change has been effected you will see the following screen, please follow the indicated instruction to complete the mode change.

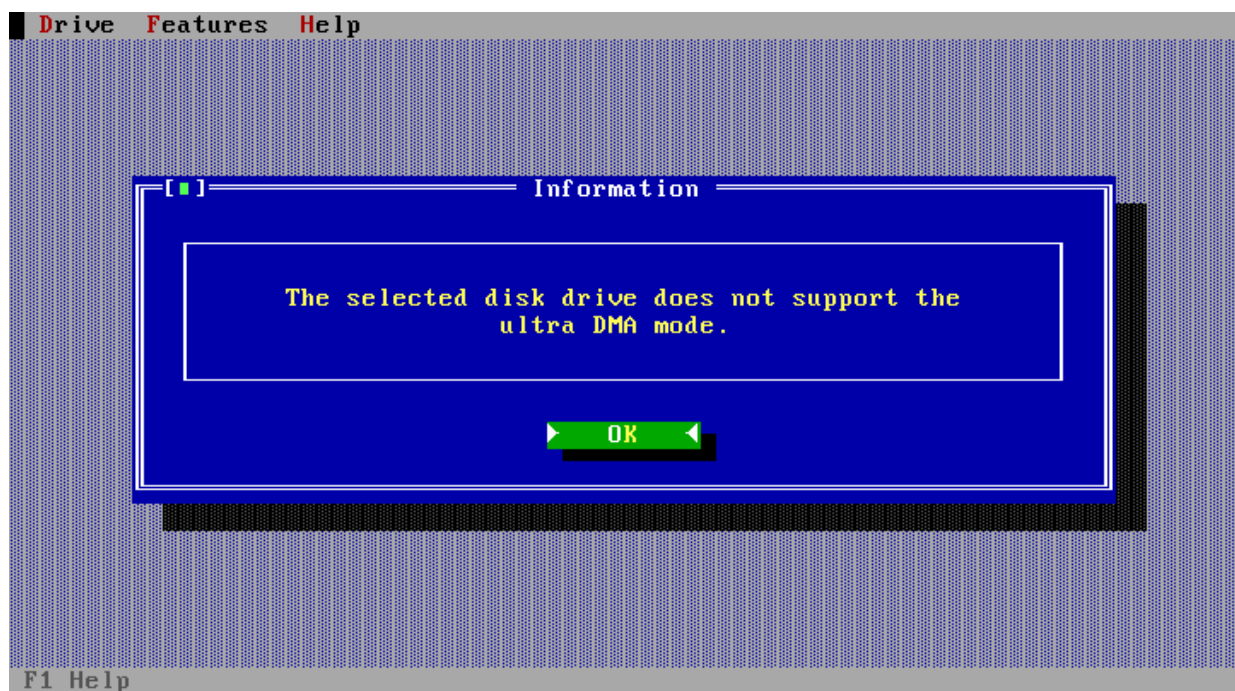


NOTE: This utility supports changing the UDMA setting of Legacy IBM and the new Hitachi Travelstar and Deskstar drives only and only those drives on which the UDMA is a changeable parameter. The following IBM Hard disk drives support changeable UDMA modes, IBM DPTA (Deskstar 34GXP & 37GP) and IBM DJSA (Travelstar 20GN, 30GT & 32GH) and newer Hitachi/IBM ATA Hard Disk Drives.

If you attempt to change the UDMA setting of a hard disk drive that doesn't support changing of this feature or on a non-IBM/Hitachi drive you will be presented with a screen displaying the following message,

The Ultra DMA mode cannot be changed with this program.

If your hard disk drive is very old it may not support UDMA in which case if you try and make a change using this utility you will see the following screen.

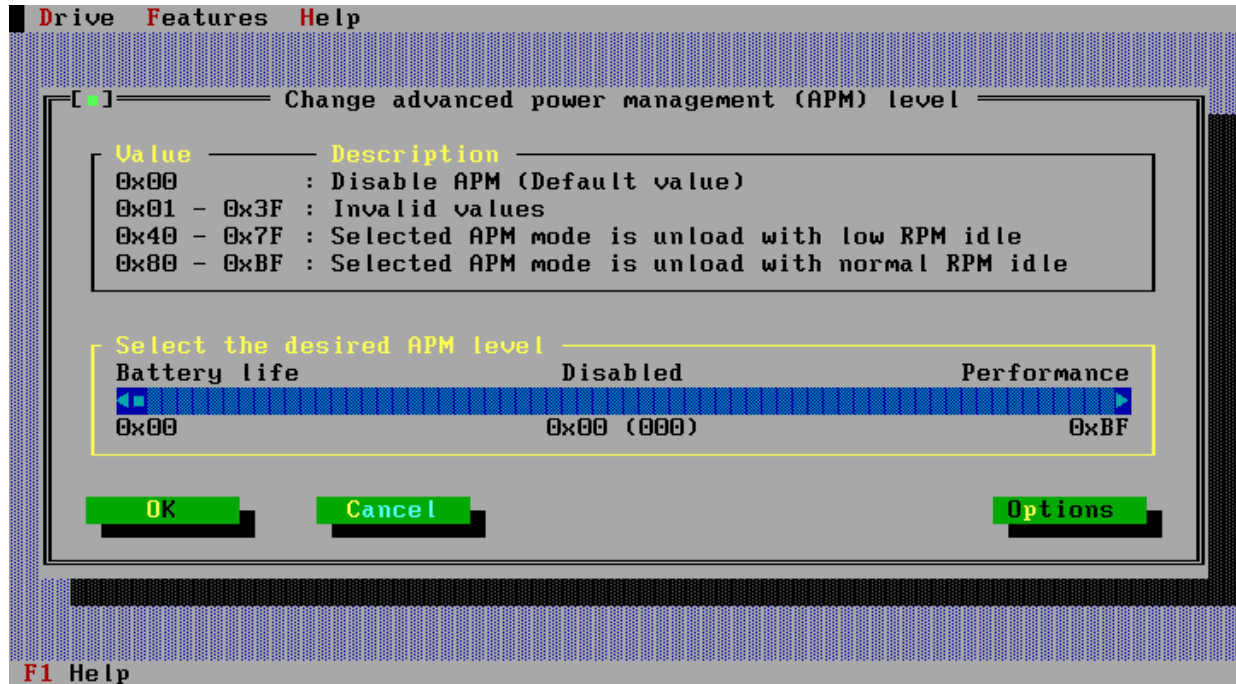


Advanced Power Management

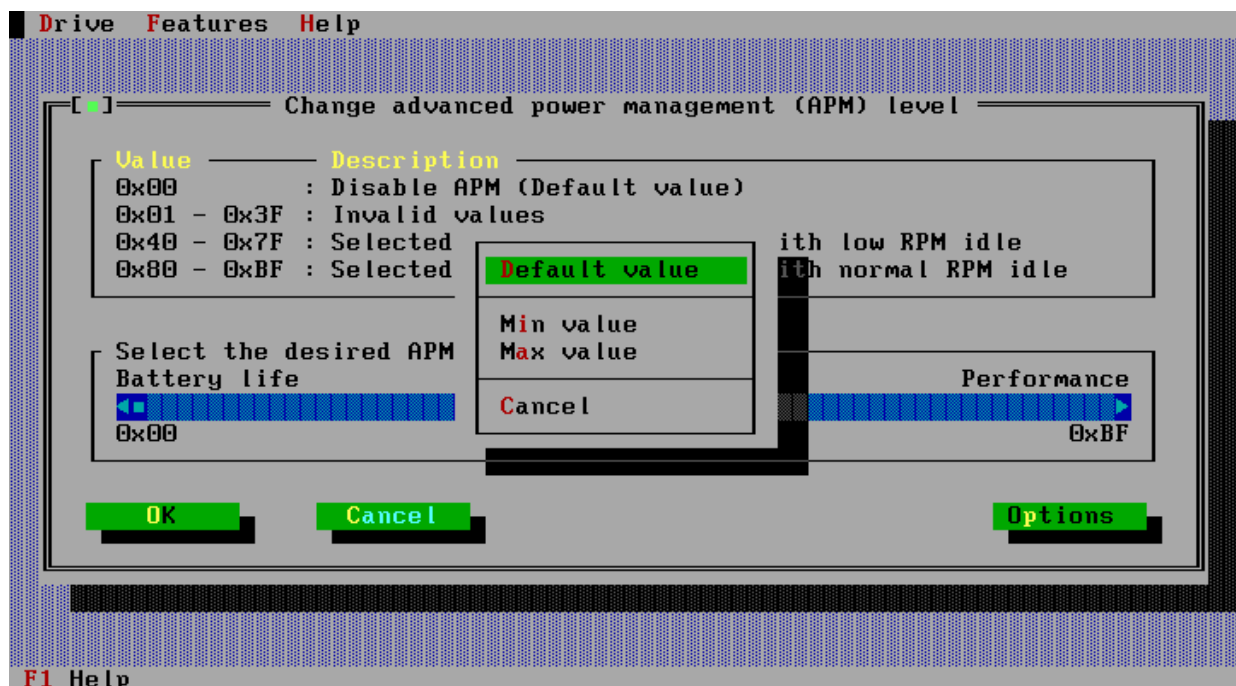
This feature allows you to change the default power saving mode of the drive. The device preserves the selected power mode across all forms of reset, that is Power on, Hardware and Software resets.

APM is a technology that adaptively adjusts the power saving feature of New Hitachi and Legacy IBM hard disk drives to suit your working style. Power is saved by idling the actuator arm, additional power is saved by unloading the actuator arm and heads from the disk to the off-ramp. The technology actively adjusts the trade-off between disk delay and power consumption. This program allows you to change the aggressiveness of the power saving.

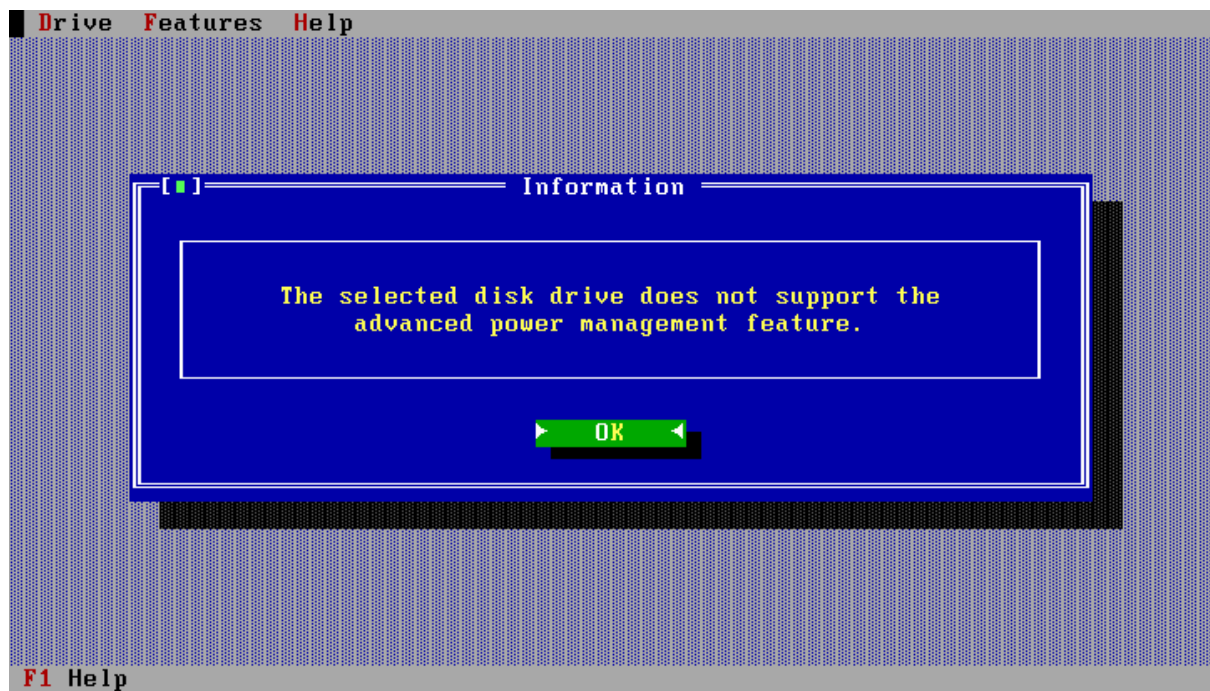
When APM is selected from the features menu, you will be presented with the screen below. From here you can disable APM or select from one of the valid levels by means of the cursor keys.



Selection of a pre-defined APM mode can also be made using the **options** button, as can be seen in the screen below.

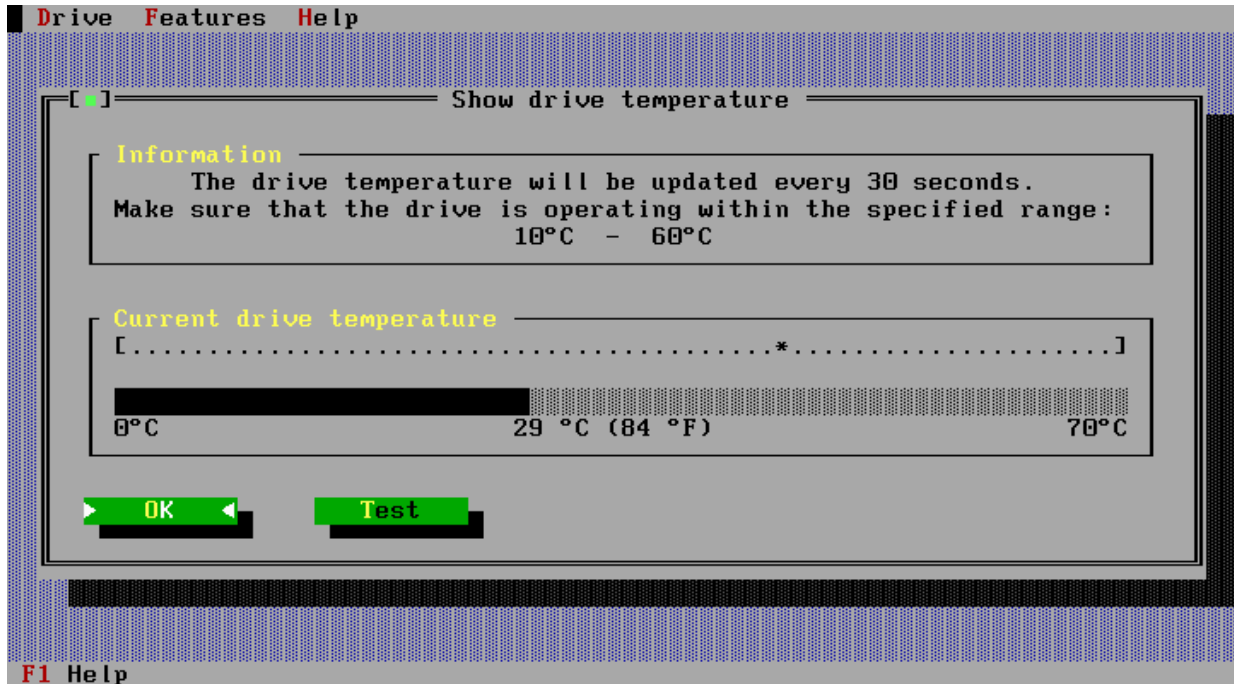


If the selected disk drive does not have or support changing the advance power mode then when this option is selected the following screen will be displayed.

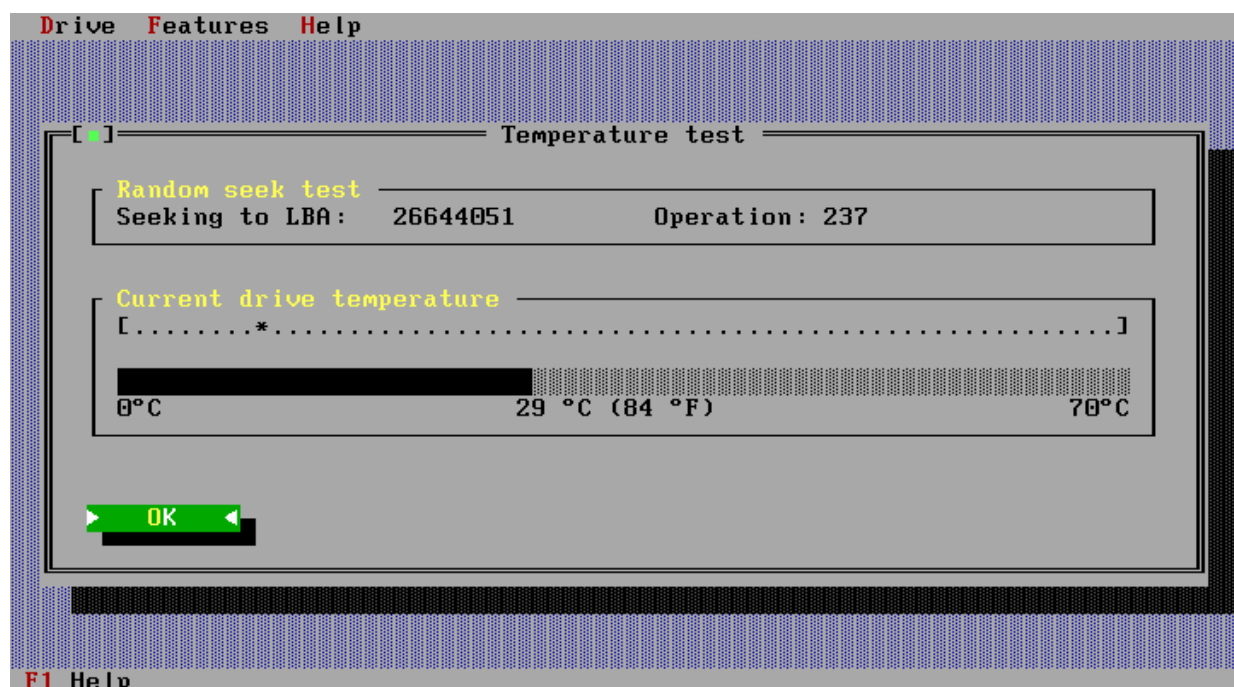


Drive Temperature Monitoring

Hard disk drives are designed to operate within a per-defined environment of temperature and humidity. If the drive(s) are operated outside of this environment then the performance and reliability are likely to deteriorate. Thus it is essential that the system or enclosure that the drive(s) are installed in is capable of providing a level of cooling that will maintain the correct operational environment for the drives. For most IBM drives the operational temperature range is 5 to 55 degrees Celsius (°C). This feature allows the temperature inside the drive to be monitored, this inside drive temperature is normally approx. 5 °C higher than the air temperature around the drive.

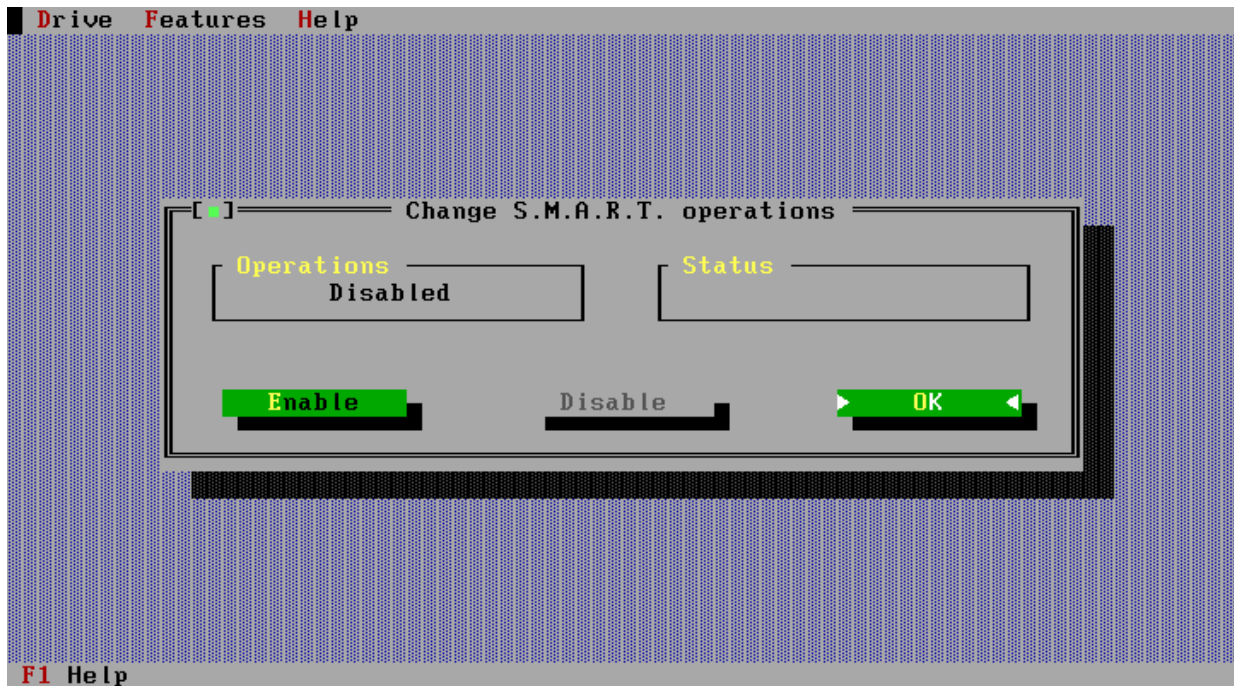


As a guide to evaluating if under normal operating conditions your system/enclosure will provide adequate cooling the **Test** option can be used. This test displays the current disk drive temperature (updated every 30 sec) during a random seek test, see the screen below. With this function you can simulate a high disk operation and determine the maximum temperature your drives will reach in your system and environment.

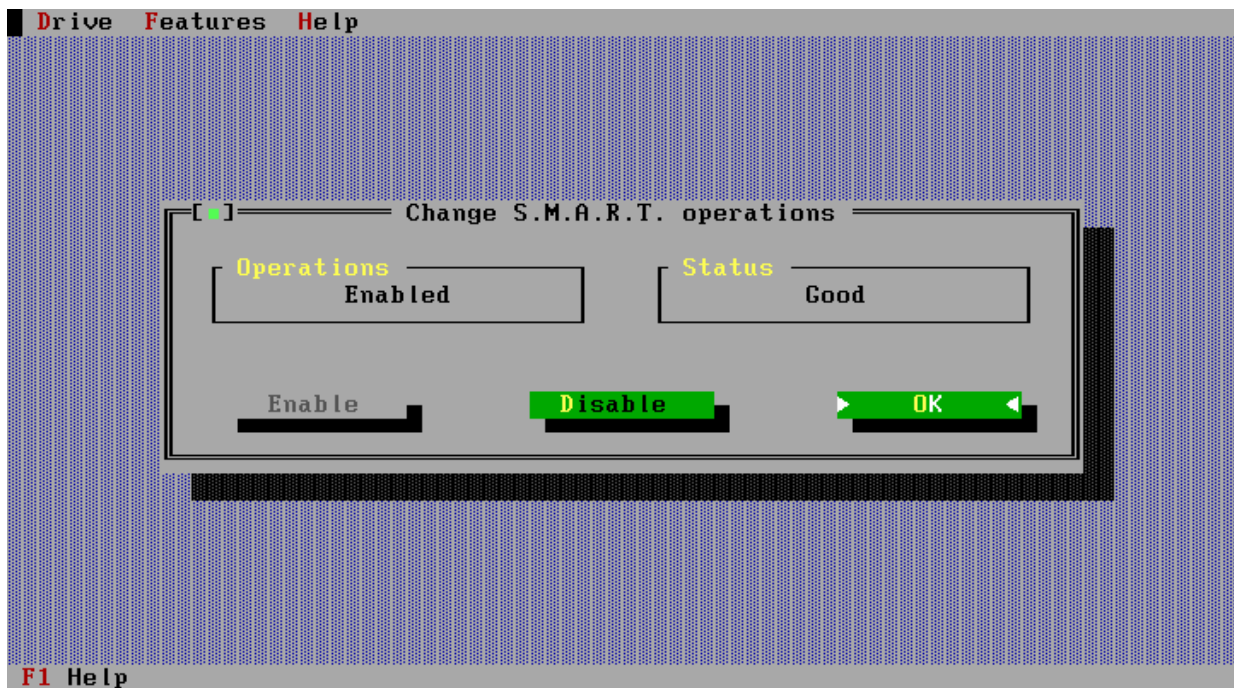


S.M.A.R.T.

S.M.A.R.T. - Self-Monitoring, Analysis and Reporting Technology is intended to protect user data and prevent unscheduled system downtime that may be caused by predictable degradation and/or fault of the disk device. By monitoring and storing critical performance and calibration parameters, S.M.A.R.T. devices employ sophisticated data analysis algorithms to predict the likelihood of near-term degradation or fault conditions.



To enable/disable S.M.A.R.T., select the drive that you wish to change. Then from the Features menu select Change S.M.A.R.T. Operations, you will be presented with a screen similar to that shown above. S.M.A.R.T. can now be enabled or disabled on the selected drive by selecting the required function and hitting the enter key. When SMART is enabled you will see the status in the Status box.



Note: on some system if SMART monitoring is enabled in the system BIOS then disabling SMART with this utility will be effective only until the next re-boot.

Feature matrix

The following matrix defines the hard disk drives and features that can be modified with this version. The drives are sorted by product family, Deskstar (3.5 inch) first then Travelstar (2.5 inch).

Deskstar hard disk drives

Model	AAM	APM	Cache	Clip	Temperature	SMART	UDMA
HDS7225xxVLATx	X	X ¹	X ²	X	X	X ²	X
IC35L0xxAVV207	X	X ¹	X ²	X	X	X ²	X
IC35L0xxAVVN07	X	X ¹	X ²	X	X	X ²	X
IC35L0xxAVVA07	X	X ¹	X ²	X	X	X ²	X
IC35L0xxAVER07	X	X ¹	X ²	X	X	X ²	X
IBM-DTLA	X	X ¹	X ²	X	X	X ²	X
IBM-DPTA	-	-	X ²	X	X	X ²	X ³
IBM-DJNA	-	-	X ²	X	X	X ²	X
IBM-DTTA	-	-	X ²	X	-	X ²	X
IBM-	-	-	X ²	X	-	X ²	X

Travelstar hard disk drives

Model	AAM	APM	Cache	Clip	Temperature	SMART	UDMA
HDS7260xxM9ATx	X	X ¹	X ²	X	X	X ²	X
HDS5480xxM9ATx	X	X ¹	X ²	X	X	X ²	X
IC25x0xxATMR0x	X	X ¹	X ²	X	X	X ²	X
IC25x0xxATCX0x	-	X ¹	X ²	X	X	X ²	X
IC25x0xxATCS0x	-	X ¹	X ²	X	X	X ²	X
IC25x0xxATDA0x	-	X ¹	X ^{2,4}	X	X	X ²	X
IBM-DJSA	-	X ¹	X ²	X	X	X ²	X
IBM-DSHA	-	-	X ²	X	-	X ²	X
IBM-DARA	-	-	X ^{2,4}	X	-	X ²	X
IBM-DGLA	-	-	X ²	X	-	X ²	X
IBM-DCYA	-	-	X ²	X	-	X ²	X
IBM-DCXA	-	-	X ²	X	-	X ²	X
IBM-DECA	-	-	X ²	X	-	X ²	X
IBM-DKLA	-	-	X ²	X	-	X ²	X
IBM-DADA	-	-	X ²	X	-	X ²	-
IBM-	-	-	X ²	X	-	X ²	-

¹ BIOS can change these values on the next reboot, power on cycle or reset.

² BIOS, RAID controller and some PCI IDE controller can change these values on the next reboot, power on cycle or reset.

³ This function is only supported for the firmware levels A20J and A30A.

⁴ Disabling Write Cache is not supported on this product.

Hardware Support and Restrictions

The Hitachi Feature Tool supports hard disk drives manufactured by Hitachi Global Storage Technologies and Legacy IBM ATA hard disk drives attached to IBM compatible PC's systems. This utility also supports the above hard disk drives when installed in systems via PCI-to-ATA adapters from Promise Technologies (UDMA/33, UDMA/66 and UDMA/100), CMD, Silicon Image and Highpoint (HPT366, HPT370, HPT372 & HPT374) also motherboards which utilises the Promise, Silicon Image and Highpoint Chipsets.

On a small number of systems, which utilises the Promise UDMA/100 or the Highpoint HPT370 chipset drives attached, as master on either of the Primary/Secondary ports may not be detected. In the event that your system displays this behaviour and you wish to use the feature tool it is suggested that you perform one of the following actions.

1. If no other drives are attached to that bus (cable) temporarily jumper the drive as a Slave and perform the required changes after which you can revert to the original jumper settings.
2. If your system also has UDMA/66 ports the drive can be temporarily attached to one of these ports whilst you make your changes, after which the drive can be reconnected to the UDMA/100 port.

The Promise FastTrak100 TX2 and Maxtor Ultra ATA/133 PCI-to-ATA Raid controllers are not supported by this utility.

Use with Non-Hitachi /IBM Products

This tool is provided for use only with Legacy IBM ATA hard disk drives and new ATA drives manufactured by Hitachi Global Storage Technologies, however some of the supported parameters of other manufacturer hard disk drives e.g. drive capacity may be changed. Hitachi doesn't support the use of this tool to change any parameters on ATA drives not manufactured by Hitachi Global Storage Technologies or by IBM and should a user choose to do this, it is done at their own risk.

Serial ATA Support

Some of the newer motherboards have support for Serial ATA incorporated onboard. The chipset that support Serial ATA are also used to provide additional parallel ATA connections (up to an additional 4 devices), if your Hitachi/IBM drive(s) are attached to these parallel ports the Feature Tool will not be able to detect them. To make changes to these drives it will be necessary to temporarily attach these drives to either of the standard ATA and make your required changes after which the drives can be reconnected to the extended ports.